

Additive Manufacturing Materials & Product Testing

CPG supports your Additive Manufacturing processes, from raw material to finished parts and regulatory requirements. Our engineers and polymer scientists select the appropriate test methods to ensure your parts are manufactured safely and consistently. CPG also helps with material formulation and root-cause mitigation.

Additive Manufacturing Services

- Molecular weight assessment of materials
- Rheology and flow properties
- Thermal properties of materials
- Fusion defects
- Mechanical properties
 - Shear/impact/tensile
 - Compression/flex/hardness
- Extent of resin cure
- Residual solvent and/or monomers
- Extractables/leachables
- Powder size
- Material degradation and aging
- Product cleanliness
- Surface properties
- Chemistries and additive packages

Why Choose CPG for AM Testing?



Expertise. CPG scientists are cross-discipline material scientists. We are members of **ASTM Committee F42 on Additive Manufacturing Technologies** and participate in standards development in this area. We have worked on parts created using powder bed fusion, material extrusion, binder jetting, lamination, vat polymerization, and directed energy deposition.



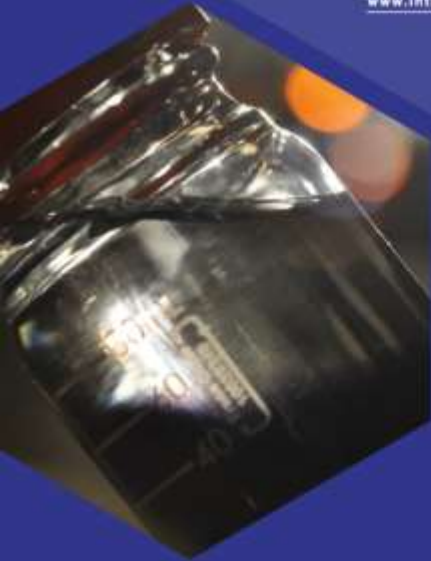
Collaboration. We work with you as an extension of your team to make sure you understand your results in the context of your prototype, part or end-use. We communicate with you at every step of your AM testing. We view collaboration as an essential component of your successful project.

Markets

Industrial • Consumer Products • Medical Device
Aerospace • Transportation • Energy



ANALYTICAL TESTING
BIOMEDICAL MATERIALS
MATERIALS CONSULTATION
RESEARCH & DEVELOPMENT



Cambridge Polymer Group, Inc. is a contract research laboratory specializing in materials. We partner with our clients to solve the world's toughest polymer problems utilizing our multi-disciplinary research team and full service laboratory.

We work with clients throughout the product life cycle to:

- Develop new materials
- Design prototypes for proof-of-concept studies
- Create and execute experimental design
- Validate and verify manufacturing processes
- Perform root-cause analysis in product failures

Cambridge Polymer Group, Inc. was founded in 1996 to provide a cost-effective resource for testing, research and development to clients who need periodic access to Ph.D.-level scientists and their support structure. We have developed a host of testing methods and materials for our clients, which number more than 1,000.

100 TradeCenter Drive, Suite 200, Woburn, Massachusetts 01801
P: 617-629-4400 • F: 617-629-9100 • info@campoly.com • www.campoly.com
ISO 17025 Accredited #3930.01 & ISO 9001 Certified #000912-1-US-1-QMS
DEA Licensed #RC0548606 & FDA Registered #3005793482

